



Rear Bumper Tire Carrier/RotopaX Installation Instructions

*Thank you for purchasing your bumper from JcrOffroad!
Checkout www.jcroffroad.com for more deals and other
great off road products. Please read the mounting
instructions below carefully before attempting to install.*

*If you have any questions or are missing parts, please
don't hesitate to call us at 269-353-1184!*

Tools Needed

- 7/16" wrench or socket
- 1/2" wrench or socket
- 9/16" wrench
- Second 9/16" wrench or socket
- 3/4" wrench
- 3/4" deep socket
- 1 1/2" socket
- 13mm wrench
- 5/32" allen
- 1/4" drill
- Anti-seize

Hardware

Tire Carrier:

- 1/4" nuts (2) [JK]
- 1/4" x 1/2" flat heads (2) [JK]
- 7/16" x 1 1/2" bolts (2)
- 3/8" USS washers (6)
- 7/16" nuts (4)
- 1/2" x 1 1/2" carriage bolts (7)
- 1/2" flange nuts (7)

RotopaX:

- 5/16" x 1" bolts (2)
- 1/4" USS washers (4)
- 5/16" nuts (2)

Install

*It is always best to trial install before painting/finishing to ensure proper fit. If installing tire carrier, take special care in keeping paint away from bearing surfaces and bearing cap threads. If using a bed liner type product, do not coat middle support, as the fit between support and spare tire mount is tight. Also note that pictures are JK version; XJ will look slightly different but function the same.

1. (JK only) Install stainless steel stop plunger track (after painting bumper) with 1/4" flat head bolts and nuts.



2. Thread in stop plunger on tire carrier.
3. Pack bearings with grease. [If you're unsure how, please reference [youtube.com](https://www.youtube.com) for bearing packing tutorials, or seek assistance. Proper greasing is essential to bearing life.]



Insert one bearing into bottom of carrier and carefully tap seal in. The perfect diameter large socket or piece of pipe is ideal, but more likely you can use a punch. It is important to avoid pounding the seal in crookedly.



4. Place carrier on spindle and close gate. Add top bearing, washer, and nut. Using an 1 1/2" socket, snug nut down so that all play is removed, but not enough to cause binding in the bearings.



5. For tire mount, loosely install both pieces together with 3 carriage bolts and flange nuts. Note: there will be play for ease of adjustment, but everything will suck together on final tightening.



6. Regarding vertical placement of tire mount on the carrier center support, there will likely be some trial and error. To get an idea, (and knowing your tire dimensions) you can measure the height off the bumper. A stock tire will have the mount sitting lower while a larger diameter will require it higher. Insert four

carriage bolts through the mount and into the holes at the height you wish; loosely attach flange nuts. Pull the mount all the way up against the carrier support and tighten all nuts.

7. To set mount depth, you'll want to have an idea of your rim/tire backspacing. A stock rim/tire combo will have the mount furthest out. You will likely need to experiment for optimal placement. Ideal will be as far inward as possible. Once set, tighten all nuts (you'll need a 3/4" deep socket for the middle).

8. Attach latch using the provided bolts (that came in the carrier) and a 7/16" socket or wrench. The latch should have a positive feel when locking, so a 13mm wrench may be needed to make minor adjustments.

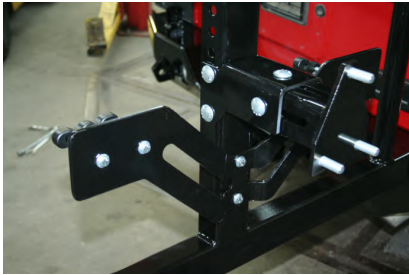


- Cover the threads of the bomb proof bearing cap with anti-seize, and using the supplied wrench if necessary, install it at this time.



- If installing a Hi-Lift jack, open tire carrier and lock in place. Using 7/16" x 1 1/2" bolts, washers, and nuts, assemble in following order: bolt with washer from outside pointing inward, washer then nut on inside of bracket,

tighten, place jack on bolts (foot side on passenger side), final washer and nut, tighten. The multiple holes on the one bracket are to accommodate differences between the red and black Hi Lifts, as well as many of the off brand farm jacks. **A possible option some choose is to replace the final nut with a large wing nut for toolless trail removal.



- If installing RotopaX containers, using 5/16" x 1 1/4" bolts, washers, and nuts, place empty bracket on center support with flares outward. Holes are slotted for adjustment; it's best to start with bracket at top of slots, keeping somewhat loose at this time. Cans will sit horizontally on XJs.

keeping loose (you will not be using their discs). Unscrew front handle of mounts and slide empty cans on with filler caps facing inwards.

- Attach RotopaX mounts to the bracket with the RotopaX supplied hardware, again



- Adjust mounts/bracket so that cans are sitting on the tire carrier base. Tighten bracket to carrier and then can mounts to bracket. Tighten RotopaX handles until they lock in place.

