

JK SHIELD TIRE CARRIER INSTALLATION INSTRUCTIONS

TOOLS NEEDED

- 7/16" wrench or socket
- 3/4" wrench or socket
- 15/16" wrench or socket
- 5/8" wrench or socket
- 3/16 Allen wrench or socket
- 1 1/8" Wrench

HARDWARE

- Tail Gate Cover (1)
- 1/2" x 2" bolts (2)
- 1/2" washers (6)
- 1/2" flange nuts (6)
- 1/2" x 1" bolts (4)
- 8mm x 1.25 (7)
- Heim joint kit (1)
- Rubber isolators (2)
- 5/16 washers (6)
- 5/16 flange nuts (2)
- Spindle Kit
- Tire mount

OPTIONAL HARDWARE

FOR HIGHLIFT MOUNT

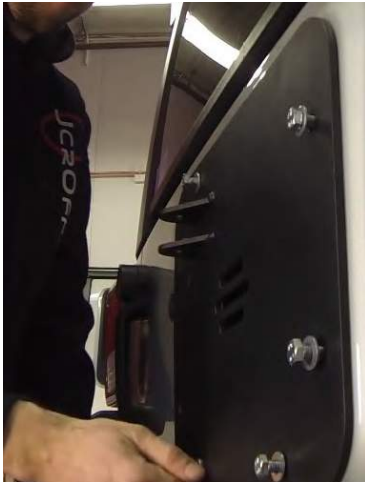
- 5/16 " x 3/4" Button head bolts (4)
- 5/16" flange nuts (4)
- 1/2" flange nuts (6)
- 7/16" x 1 1/2" bolts (2)
- 3/8 washers (2)
- 7/16 flange nuts (2)
- 7/16" wing nuts (2)

**Please read the mounting instructions below
carefully before attempting to install.**

Thank you for purchasing your new Shield Tire Carrier from JcrOffroad! Checkout our website, www.jcroffroad.com for more deals and other great off-road products. Be sure to rate and review our product online. If you have any questions or are missing parts, please don't hesitate to call us at 269-353-1184!

It is always best to trial install before painting/finishing to ensure proper fit. You should first install your JcrOffroad rear bumper before installing this product. When installing this tire carrier, take special care in keeping paint away from bearing surfaces and bearing cap threads. If using a bed liner type product, you may need to use a drill or file to open holes or openings to the proper size.

- 1** Using the (7) 8mm bolts, install the Jcr tailgate plate on the tailgate. Make sure the connection bracket is in the top left corner.



- 2** Before installing the spindle, you may need to clean the spindle sleeve. You want to make sure it's a slip fit.



- 3** With the spindle in the bumper, install the lower 3/4" grade 8 bolt into the bottom of the spindle. You may need to lift the spindle a little to help get the bolt threaded. Once you have the bolt started use a 1 1/8" wrench to tighten the lower bolt.



- 4** Next, pack the bearings with grease. Working the bearings around in your hands, knead the grease into each of the bearings. Apply a little grease to the inside of the oil seal as well as the top cap o-ring.



- 5** Prop the carrier so you can install the lower bearing. Place the lower bearing taper side down into the carrier. Using a large socket or a punch, knock in the lower oil seal with the green side of the seal going into the carrier. Make sure you hammer it in carefully and most importantly, straight. Now with the lower bearing installed, slide the carrier onto the spindle.



- 6** With the upper tire carrier on the spindle, place the top bearing, taper down over the spindle and into the hub. Next Install the large washer and top spindle nut. Using a 1 1/2" socket and snug it up (65 pounds). It may be necessary to place a wrench on the bottom bolts to achieve torque. With that tightened down, Install the o-ring onto the aluminum top cap and use the provide wrench to snug up the cap.ith the carrier on the Jeep.



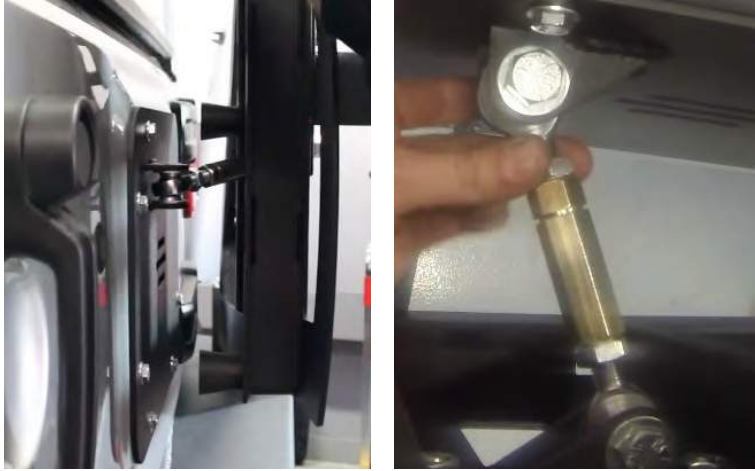
- 7** Using spacers provided, install the tailgate link onto the shield carrier with the 1/2" x 2" bolts and tighten them up. Once this is done, loosely install the rubber isolators onto the back of the carrier.



- 8** Carefully close the carrier. Measure to determine the mounting height of your tire. Bolt install the inner tire mount in the desired location allowing for clearance on your bumper. Using a broom handle or any other flat object, measure the back spacing of your Tire and Wheel. Next, loosely install the (3) carriage bolts into the outer tire mount. Set your length and tighten the top bolt first, then tighten the side bolts. Note that if you plan on installing the RotoPax mount, you will need to add 1 inch to your back spacing.



- 9** Lengthen the tailgate link, then close the gate and install the 1/2" x2 bolt. You may need to use a punch to line everything up. Tighten the link until the rubber isolators touch the tailgate plate. Note that the rubber isolators may need to be shimmed out using washers. This all depends on how the bumper is positioned. Once adjusted, open the gate and tighten the jam nuts on the link.



OPTIONAL

- 10** If installing the optional hi-lift mount, place the mount onto the carrier and loosely install the (4) 5/16" button head bolts. Using a 3/16" allen, tighten up the (4) bolts. Next, install the 7/16" bolts that will hold the hi-lift. Using a socket and hammer, tap on the retaining clips. Now that your bolts are in place, insert the jaw of the jack into the carrier and install the wing nuts, then tighten them down



11 Once you have everything onto your tire carrier and in place, go back and tighten up anything you might have missed.

12 Now It's Time to Enjoy Your New Jcr Off-Road Bumper and Tire Carrier